













RIF. **091-2004K**

Supporto antifurto da pavimento per IPAD

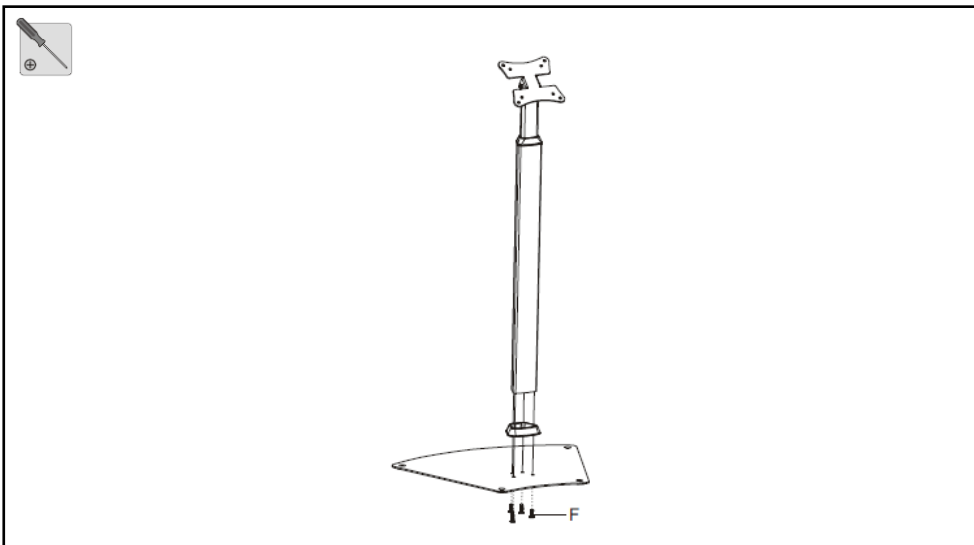


CONTENUTO

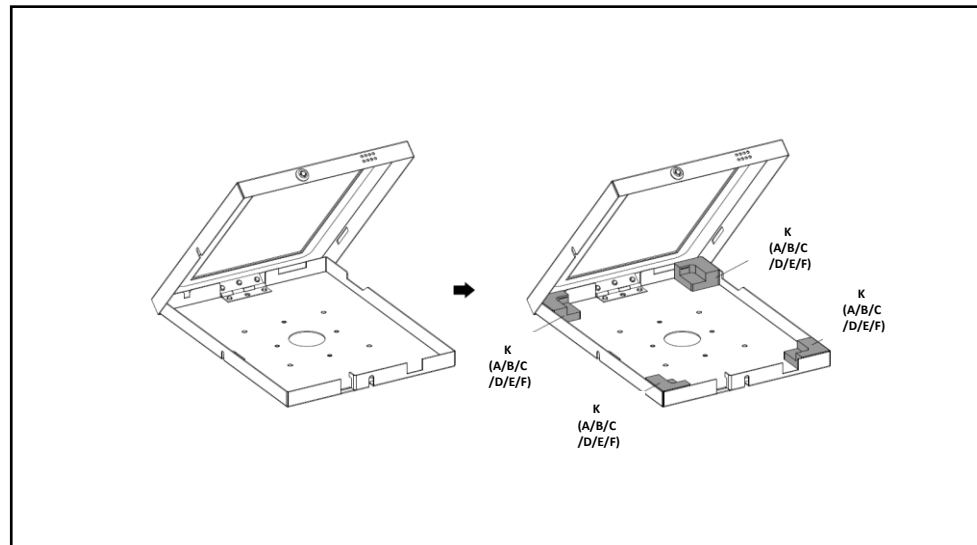
A	Colonnina (x1)
B	Case tablet (x1)
C	Base (x1)
D	Adattatore base (x1)
E	Chiave (x2)
F	Viti M6x16 (x4)

G	VitiST 4.8x30 (x4)
H	Cheville (x4)
I	Clé Allen (x1)
J	Boulon M5x8 (x4)
K	Cale silicone A (x2), B (x2), C, D, E, F
L	Cache bouton HOME (x1)

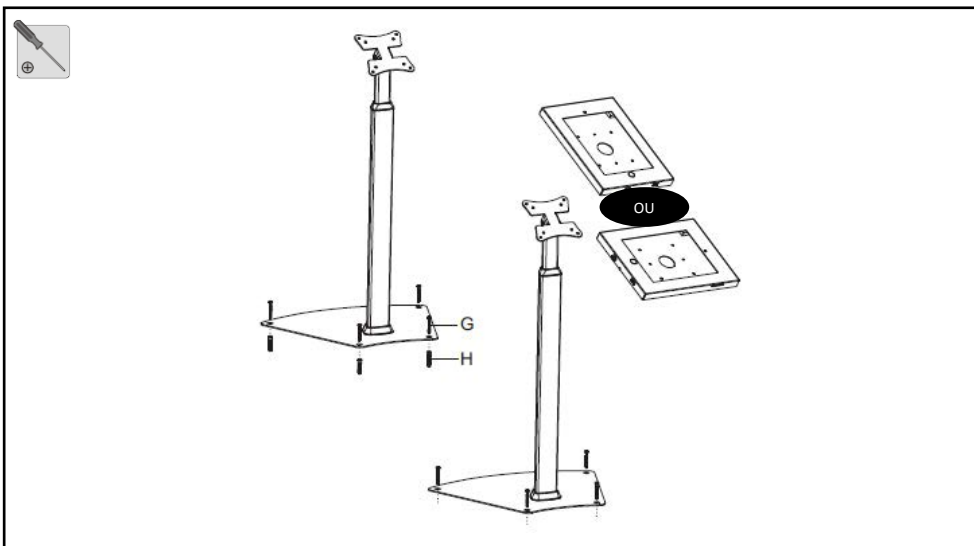
1. Fissare la colonnina alla base



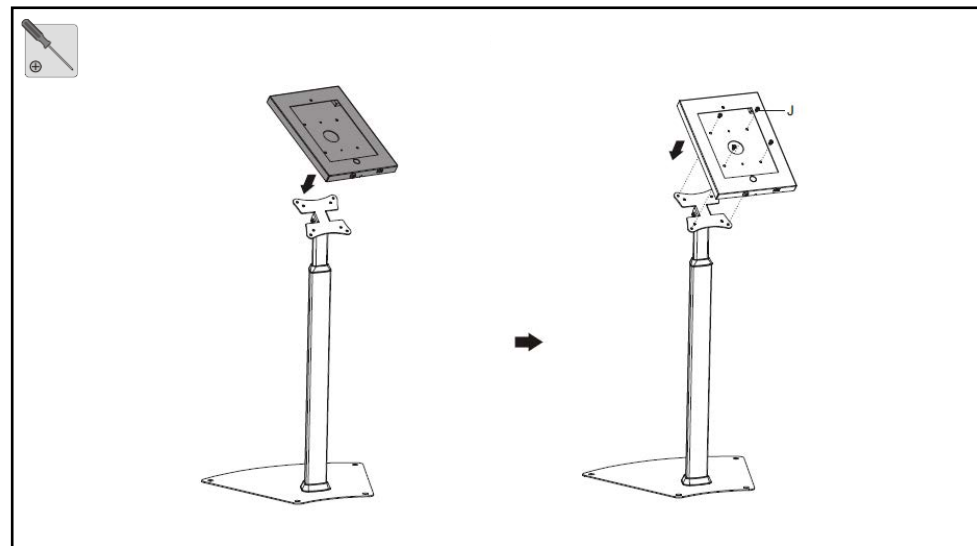
3. Posizionare i distanziatori



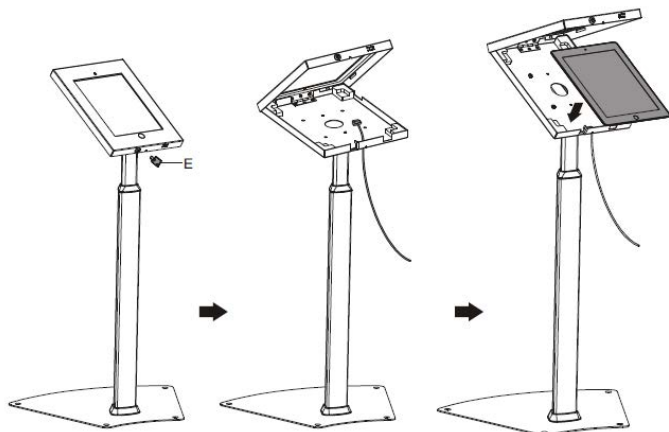
2. Fissare la base (optional) scegliere la modalità fissaggio landscape o portrait



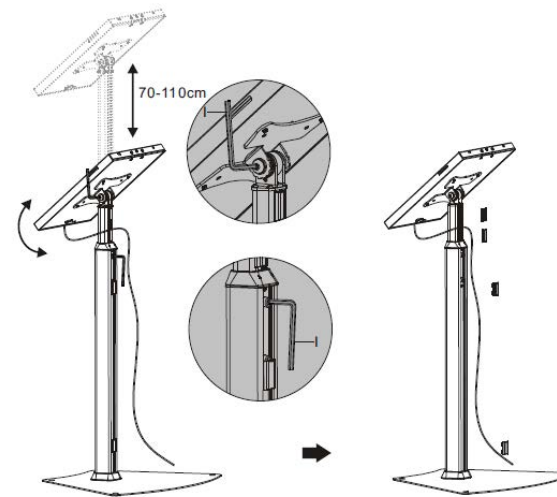
4. Fissare il case alla piastra



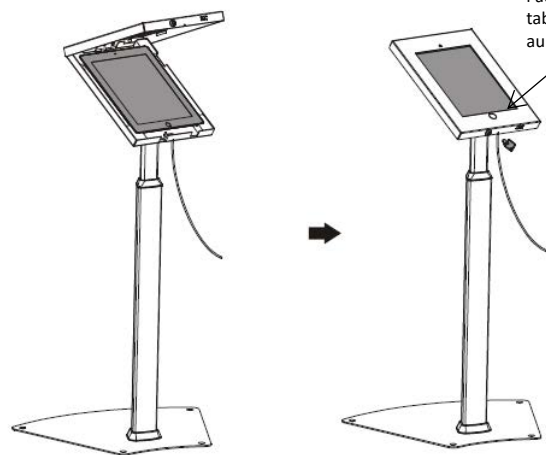
5. Passare il connettore e inserire il tablet



7. Stringere la vite della colonnina e passare il cavo



6. Chiudere la custodia e bloccarla



Selon votre besoin, donnez l'accès au bouton HOME de la tablette ou protégez-le grâce au cache (L).

8. Regolare la posizione del tablet in base alle esigenze

